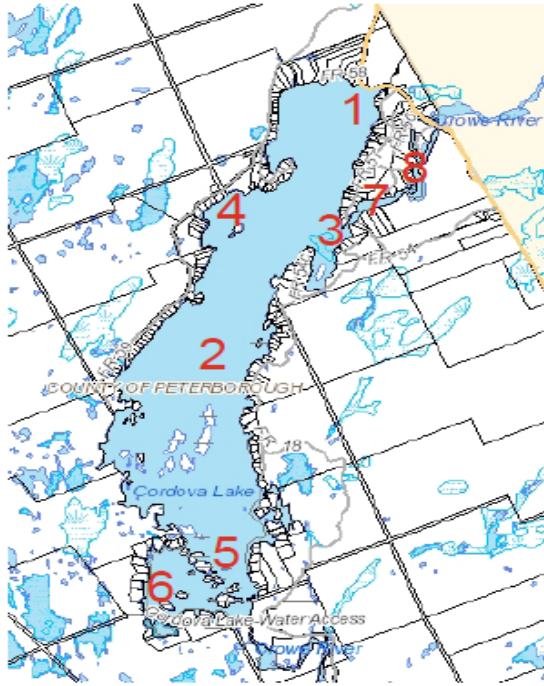




**E. coli Testing Sites**



**E. coli Testing Limits / Results:**

In Ontario, the recreational water quality guideline is a maximum of **200 E. coli per 100 mL of water.**

The new recreational water quality standard is a geometric mean concentration (minimum of five samples) of less than 200 E. coli per 100 millilitres, and a single-sample maximum concentration of less than 400 E. coli per 100 millilitres, while the previous standard was less than 100 E. coli per millilitres as a geometric mean.

**Peterborough Public Health Site - Beach Sampling Testing Results:**

**SAFE** – Geometric Mean concentration of 5 samples with  $\leq 200$  E. coli/100mL water and/or Single-sample maximum concentration with  $\leq 400$  E. coli/100mL water

**UNSAFE** – Geometric Mean concentration of 5 samples with  $>200$  E. coli/100mL water and/or Single-sample maximum concentration with  $>400$  E. coli/100mL water

**CLOSED** – Potential adverse events such as confirmed blue-green algae bloom

**Note:** Unit of measurement in table are E. coli cfu/100ml (where cfu = colony forming units)

**Comments:**

1. We will monitor E. coli every June, July, August & September (key swimming months).
2. This document and DIY: Blue Green Algae Tests will be uploaded to the CLCA website under Environmental + Page.

Sample Date	Sample Time Range	Beach 1	Stump Bay 4	River Bridge 8	River Midway 7	River Mouth 3	Mid Lake 2	South End East 5	South End West 6
26-Jun-24	10:00 am - 10:40 am	11	3			71	4	2	2
08-Jul-24	11:15 am - 11:50 am (concentrated on river)			23	47	34			
02-Aug-24	11:10 am - 12:10 pm	5	2			45	8	3	19
11-Sep-24	11:40 am - 12:45 pm	4	1			25	1	1	1